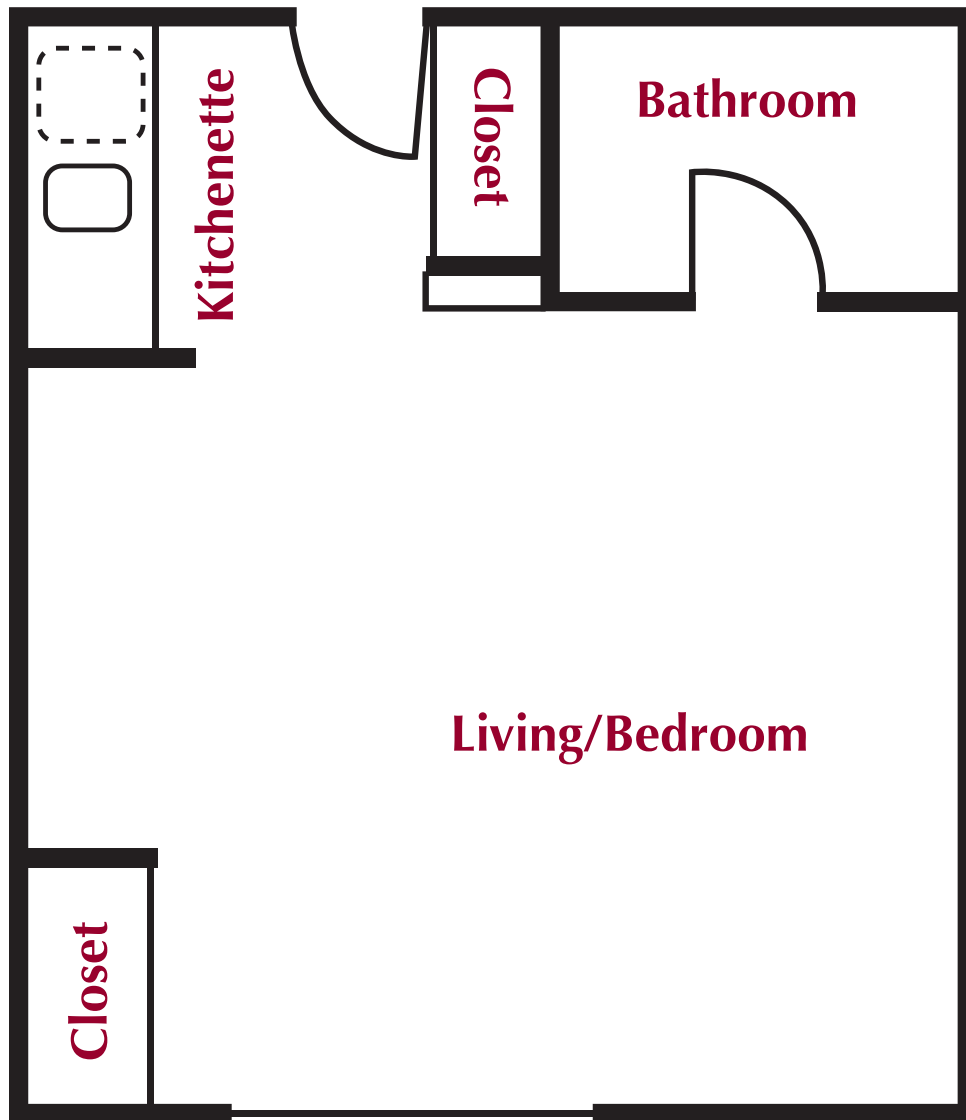


Assisted Living

Studio – 343 sq. ft.
One Bath



Regency Park

Assisted Living and Memory Care

The Difference Between Living and Living Well

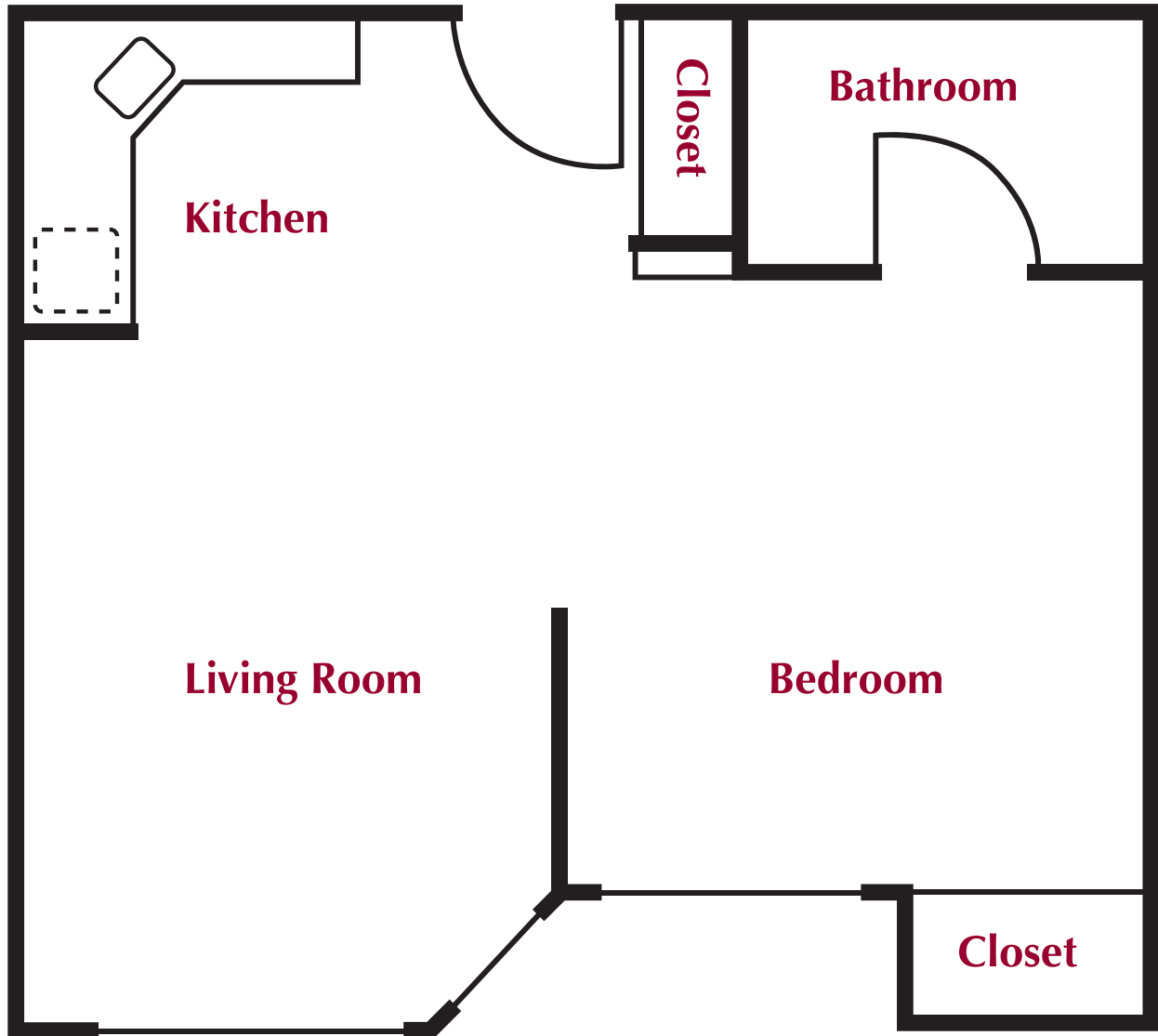
8300 SW Barnes Road | Portland, OR 97225
503-292-8444 | www.RegencyParkSeniorLiving.com

The Difference Between Living and Living Well



Assisted Living

One Bedroom – 440 sq. ft.
One Bath



Regency Park

Assisted Living and Memory Care

The Difference Between Living and Living Well

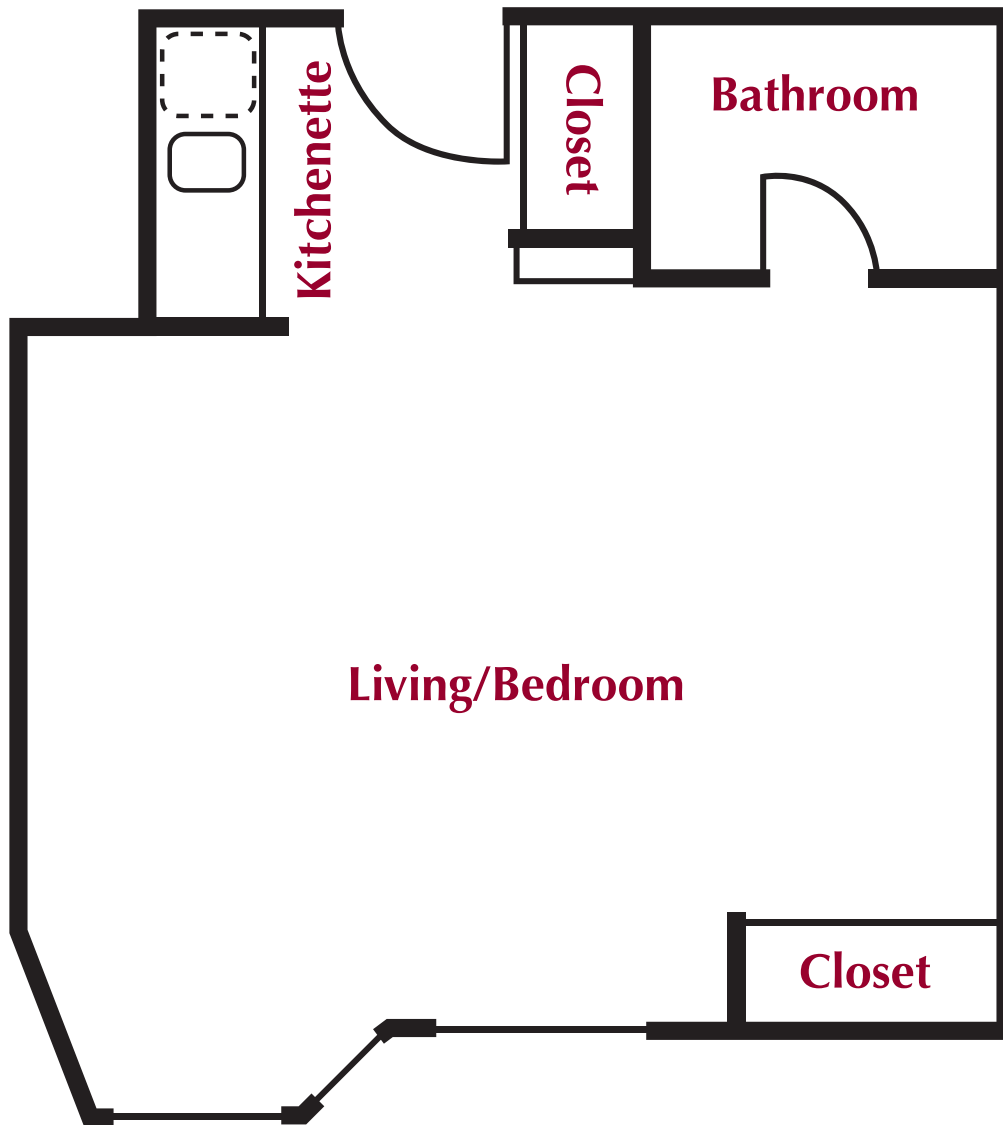
8300 SW Barnes Road | Portland, OR 97225
503-292-8444 | www.RegencyParkSeniorLiving.com

The Difference Between Living and Living Well



Assisted Living

Studio with Alcove – 370 sq. ft.
One Bath



Regency Park

Assisted Living and Memory Care

The Difference Between Living and Living Well

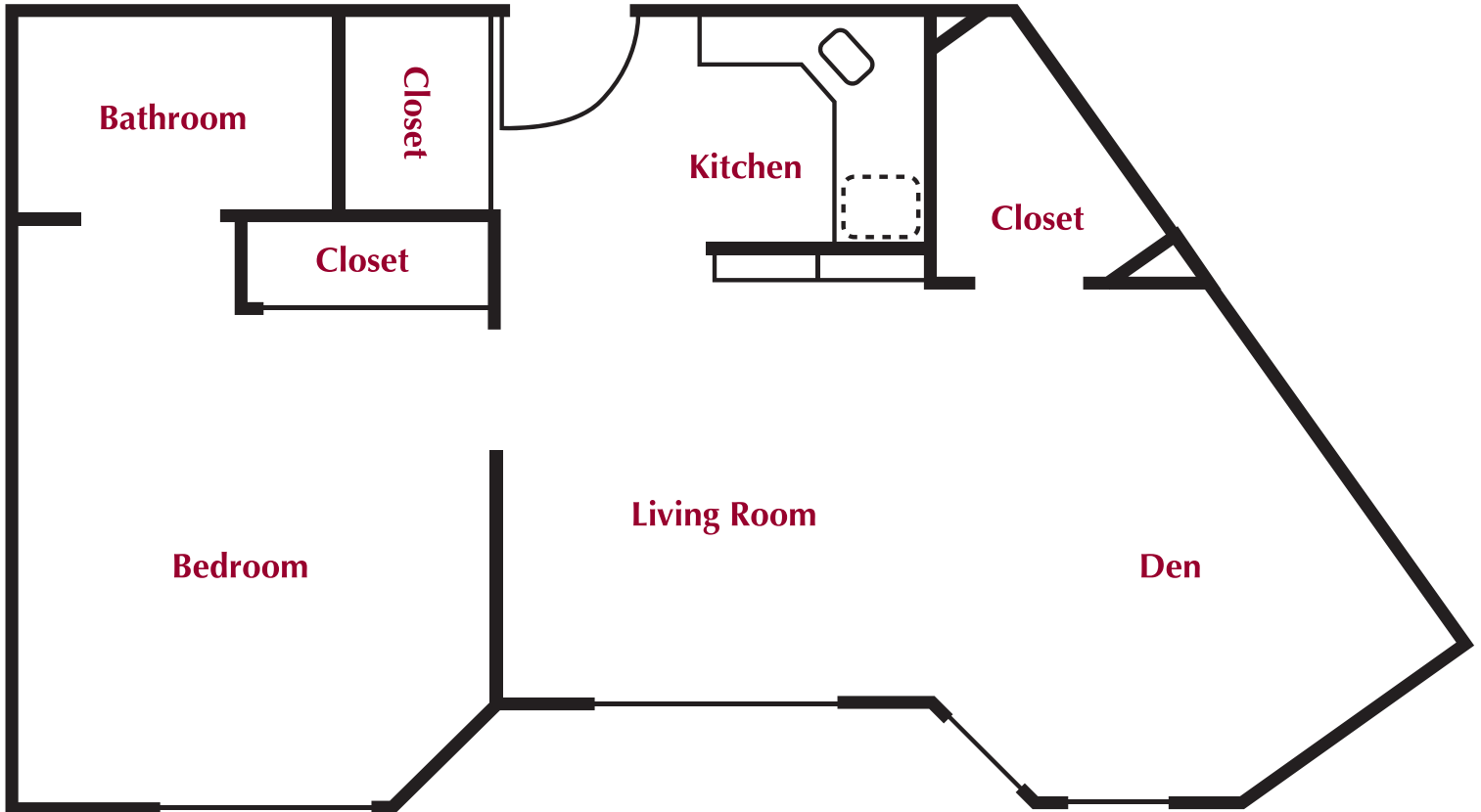
8300 SW Barnes Road | Portland, OR 97225
503-292-8444 | www.RegencyParkSeniorLiving.com

The Difference Between Living and Living Well



Assisted Living

One Bedroom with Den – 615 sq. ft.
One Bath



Regency Park

Assisted Living and Memory Care

The Difference Between Living and Living Well

8300 SW Barnes Road | Portland, OR 97225
503-292-8444 | www.RegencyParkSeniorLiving.com

The Difference Between Living and Living Well

