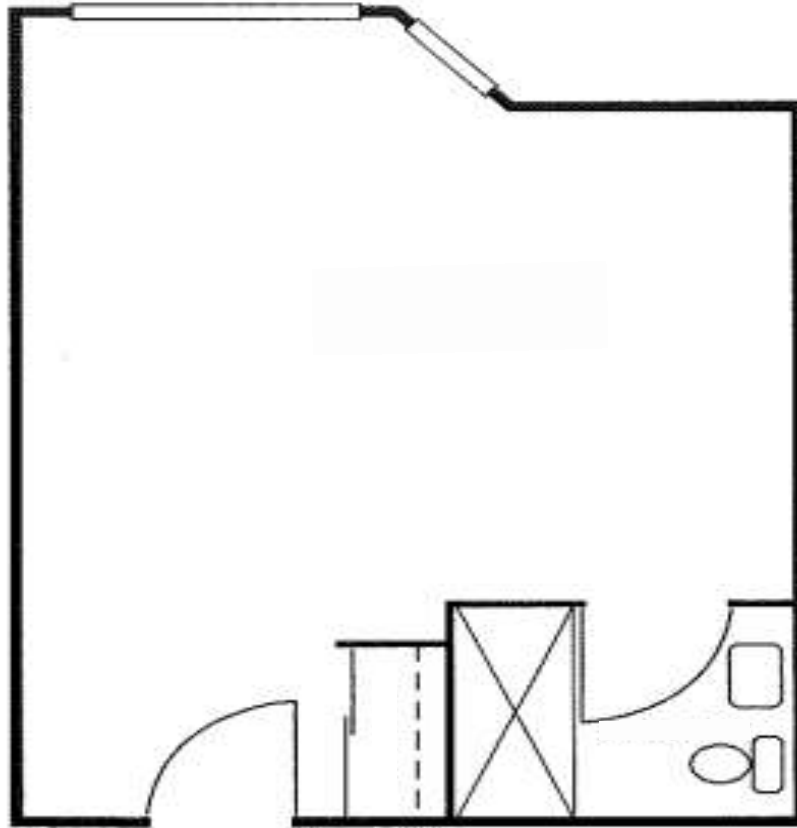


# Memory Care

---

Studio  
343 Square Feet



**Regency Park**

**Assisted Living and Memory Care**

*The Difference Between Living and Living Well*

8300 SW Barnes Road | Portland, OR 97225  
503-292-8444 | [www.RegencyParkSeniorLiving.com](http://www.RegencyParkSeniorLiving.com)

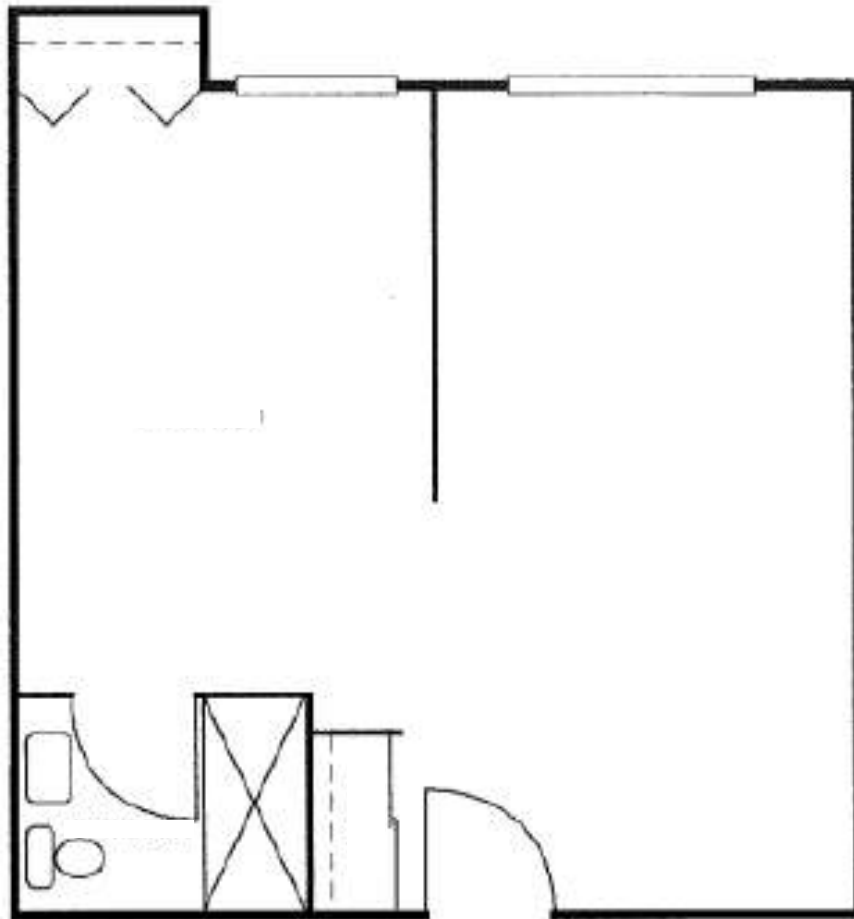
*The Difference Between Living and Living Well*



# Memory Care

---

Companion Apartment  
440 Square Feet



## Regency Park

**Assisted Living and Memory Care**

*The Difference Between Living and Living Well*

8300 SW Barnes Road | Portland, OR 97225  
503-292-8444 | [www.RegencyParkSeniorLiving.com](http://www.RegencyParkSeniorLiving.com)

*The Difference Between Living and Living Well*

